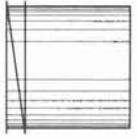


TWIST-LOCKS

AIR-TRAC[®]



TL-1



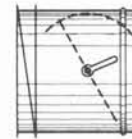
TL-2



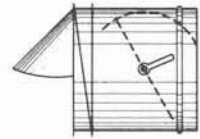
TL-3



TL-4



TL-5



TL-6

Scoop Available in 45 & 90, PLEASE SPECIFY

WHEN ORDERING PLEASE SPECIFY

- TL-1 — Plain
- TL-2 — Beaded
- TL-3 — Crimped
- TL-4 — With Scoop 45° & 90°
- TL-5 — With Damper
- TL-6 — With Scoop & Damper 45° & 90°

} Beaded or
Crimped
Available } -specify

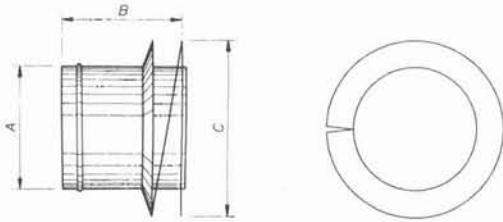
TWIST-LOCK is an engineered fitting used for making round take-off connections to rectangular fiber glass duct board and are manufactured of galvanized steel, riveted construction throughout.

The locking groove is die formed, insuring constant fit and ease of installation.

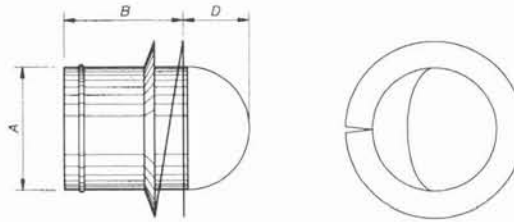
The adjustable damper components are factory assembled, using spring loaded, retractable bearing and positive locking regulator damping hardware.

TL - TWIST-LOCK

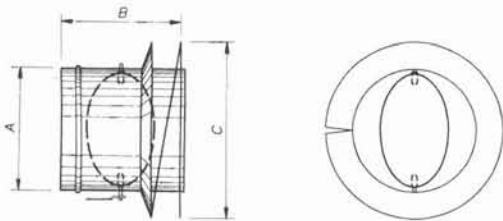
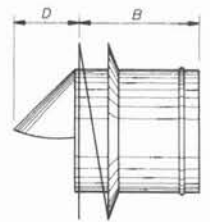
AIR-TRAC[®]



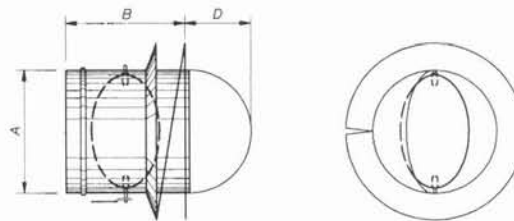
TWIST-LOCK FITTING



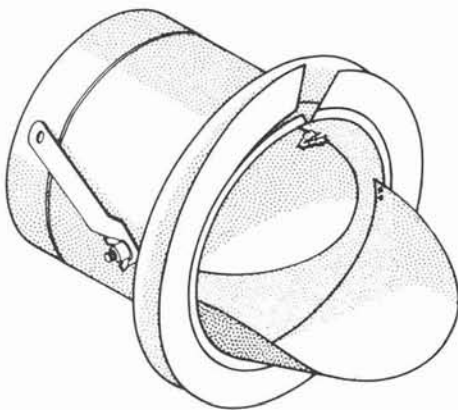
TWIST-LOCK FITTING WITH 45° EXTRACTOR



TWIST-LOCK FITTING WITH DAMPER



TWIST-LOCK FITTING WITH DAMPER AND 45° EXTRACTOR



| ORDER SIZE | A | B | C | D | CUT ★ HOLE |
|------------|--------|--------|--------|--------|------------|
| 4 | 3-7/8 | 5-5/8 | 5-7/8 | 2-1/2 | 4 |
| 5 | 4-7/8 | 5-5/8 | 6-7/8 | 3 | 5 |
| 6 | 5-7/8 | 5-5/8 | 7-7/8 | 3-1/2 | 6 |
| 7 | 6-7/8 | 5-5/8 | 8-7/8 | 4 | 7 |
| 8 | 7-7/8 | 7-5/8 | 9-7/8 | 4-1/2 | 8 |
| 9 | 8-7/8 | 7-5/8 | 10-7/8 | 5 | 9 |
| 10 | 9-7/8 | 7-5/8 | 11-7/8 | 5-1/2 | 10 |
| 12 | 11-7/8 | 11-5/8 | 13-7/8 | 6-1/2 | 12 |
| 14 | 13-7/8 | 11-5/8 | 15-7/8 | 7-1/2 | 14 |
| 16 | 15-7/8 | 11-5/8 | 17-7/8 | 8-1/2 | 16 |
| 18 | 17-7/8 | 11-5/8 | 19-7/8 | 9-1/2 | 18 |
| 20 | 19-7/8 | 11-5/8 | 21-7/8 | 10-1/2 | 20 |

★ ± 1/32"