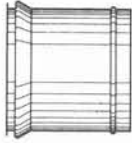


# SPIN-INS

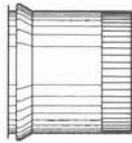
## AIR-TRAC<sup>®</sup>



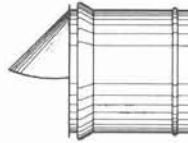
SI-1



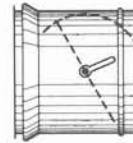
SI-2



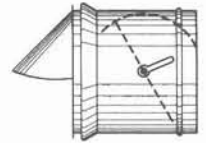
SI-3



SI-4



SI-5



SI-6

Scoop Available in 45 & 90, PLEASE SPECIFY

WHEN ORDERING PLEASE SPECIFY

- SI-1 — Plain
- SI-2 — Beaded
- SI-3 — Crimped
- SI-4 — With Scoop 45° & 90°
- SI-5 — With Damper
- SI-6 — With Scoop & Damper 45° & 90°

} Beaded or  
Crimped  
Available } -specify

SPIN-IN is an engineered fitting used for making round take-off connections to rectangular sheet metal duct and are manufactured of galvanized steel, riveted construction throughout.

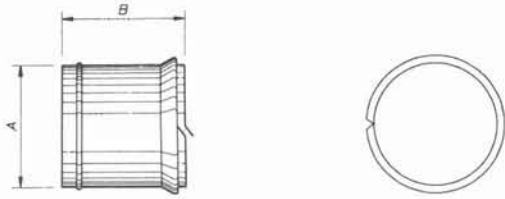
The locking groove is die formed, insuring constant fit and ease of installation.

The adjustable damper components are factory assembled, using spring loaded, retractable bearing and positive locking regulator damper hardware.

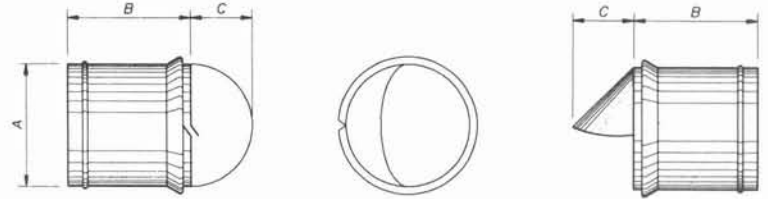
011-SI

# SI – SPIN-IN

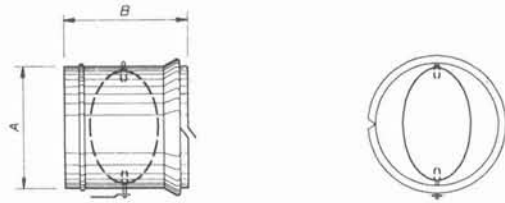
## AIR-TRAC®



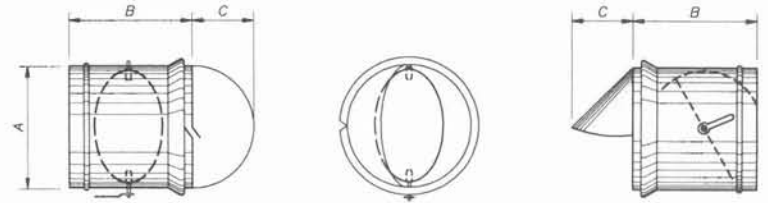
SPIN-IN FITTING



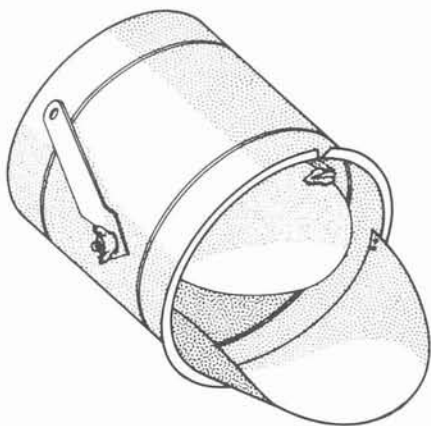
SPIN-IN FITTING WITH 45° EXTRACTOR



SPIN-IN FITTING WITH DAMPER



SPIN-IN FITTING WITH DAMPER AND 45° EXTRACTOR



ORDER SIZE	A	B	C	CUT★ HOLE
4	3-7/8	5-5/8	2-1/2	3-13/16
5	4-7/8	5-5/8	3	4-13/16
6	5-7/8	5-5/8	3-1/2	5-13/16
7	6-7/8	5-5/8	4	6-13/16
8	7-7/8	7-5/8	4-1/2	7-13/16
9	8-7/8	7-5/8	5	8-13/16
10	9-7/8	7-5/8	5-1/2	9-13/16
12	11-7/8	11-5/8	6-1/2	11-13/16
14	13-7/8	11-5/8	7-1/2	13-13/16
16	15-7/8	11-5/8	8-1/2	15-13/16
18	17-7/8	11-5/8	9-1/2	17-13/16
20	19-7/8	11-5/8	10-1/2	19-13/16

★ ± 1/32"