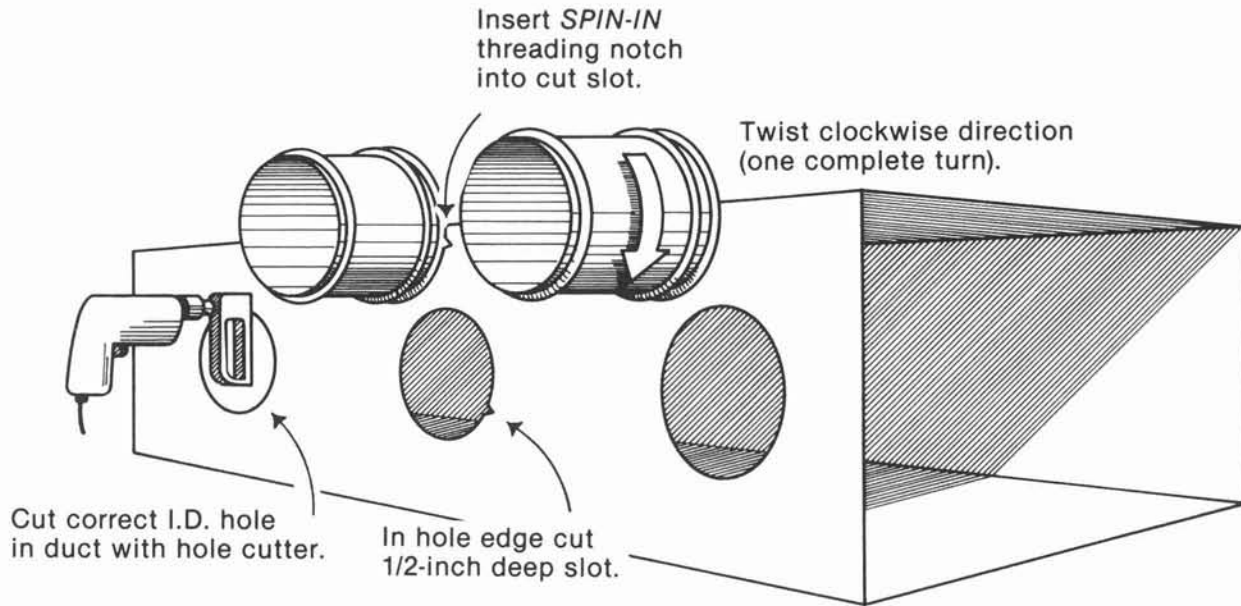


SPIN-IN & TWIST-LOCK

AIR-TRAC[®]

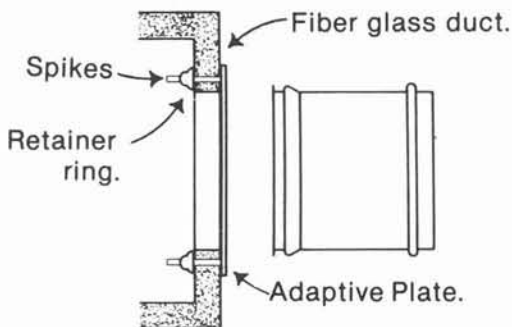
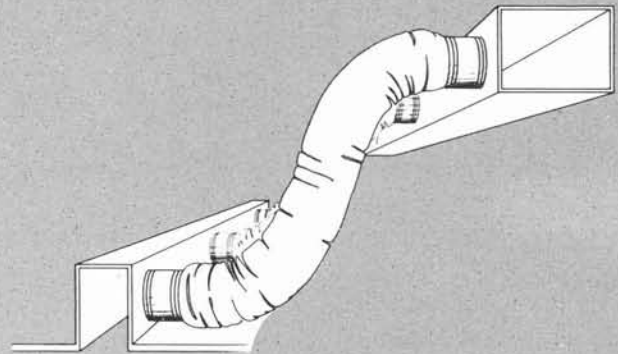
INSTALLATION



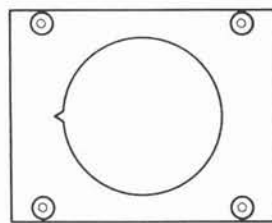
A combination of quality materials and specialized machinery results in an engineered tight connection and constant radius. Systems operating at over 0.5 inches (w. g.) internal pressure should be additionally sealed with a suitable duct sealer.

INSTALLATION PROCEDURES

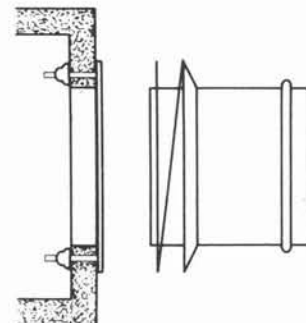
1. Cut correct I.D. hole in duct.
2. Cut 1/2-inch deep slot in hole edge to provide offset for **SPIN-IN** threading notch.
3. Insert threading notch of **SPIN-IN** fitting into slot and twist one complete revolution in a clockwise direction to seat the fitting securely in place.



SI—SPIN-IN installation with adapter plate with fiber glass duct board.



AP
Adapter Plate
(Optional)



TL—TWIST-LOCK installation with fiberglass duct board.